

PROJECT:
Forest View Elementary
CLIENT:
2/90 Sign Systems
DATE: 9/5/23

Grand Rapids, MI 49512
800.777.4310 | 616.656.4310
F: 616.656.4300 | info@290signs.com

Project Details

- S.1 EXIT ID - Qty 5**
3x4 Slide Sign, with (1) 3x4 insert with ADA tactile and braille text
- S.3 STACK ID - Qty 58**
4x6 Slide sign with (1) 4x6 window insert to hold paper insert with laser print text
- S.6 ROOM ID - Qty 67**
6x6 Slide sign with (1) 2x6 insert with ADA tactile and braille text and (1) 4x6 window insert laser printed paper insert
- S.9 RESTROOM ID - Qty 8**
8x6 Slide sign with (1) 6x6 insert with direct print symbol and (1) 2x6 insert with ADA tactile text and braille
- S.12 OVERHEAD RESTROOM FLAG - Qty 6**
6x14 Slide sign with (1) 6x14 insert with direct print symbol and text on each side
- S.16 OVERHEAD ID - Qty 4**
8x34 Slide sign with 8x34 insert including direct print text, 1 each side.
- S.19 CONFERENCE ROOM ID - Qty 1**
6x8.5 Slide sign with (1) 2x8.5 insert with ADA raised text and braille, (1) 4x8.5 insert with direct print text, and (1) 1x8.5 Available / In Use Slider insert
- S.21 INFORMATION - Qty 5**
15x8.5 Slide sign with (1)3x8.5 header insert with direct print text and (1) 12x8.5 acrylic window insert to holder 11x8.5 paper
- S.22 EVACUATION PLAN - Qty 7**
15x8.5 Slide sign with (1)3x18 header insert with direct print text and (1) 15x18 acrylic window insert to holder 11x17 paper

Finishes

Insert Colors	Copy Color	Paper Color	LP Copy Color	End Caps
736 Cardinal Red	708 White	408 White	704 Black	101 Satin
703 Cool Grey	704 Black			

Font:
Arial: AaBbCcDdEeFfGgHhIiJjKkLlMmNnOoPpQqRrSsTtUuVvWwXxYyZz 1234567890

Forest View Elementary FAMILY PAGE.plt
ILLUSTRATOR: mb

Copyright © 2020, 2/90 Sign Systems, Inc. For Customer Use Only - All Rights Reserved. Printers and viewers may distort drawing, which is provided for illustration purposes only.



S.1
3" x 4"



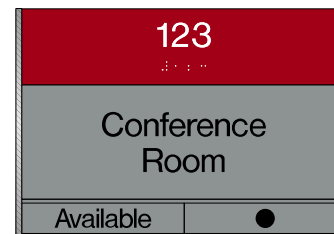
S.3
4" x 6"



S.6
6" x 6"



S.9
8" x 6"



S.19
6" x 8-1/2"



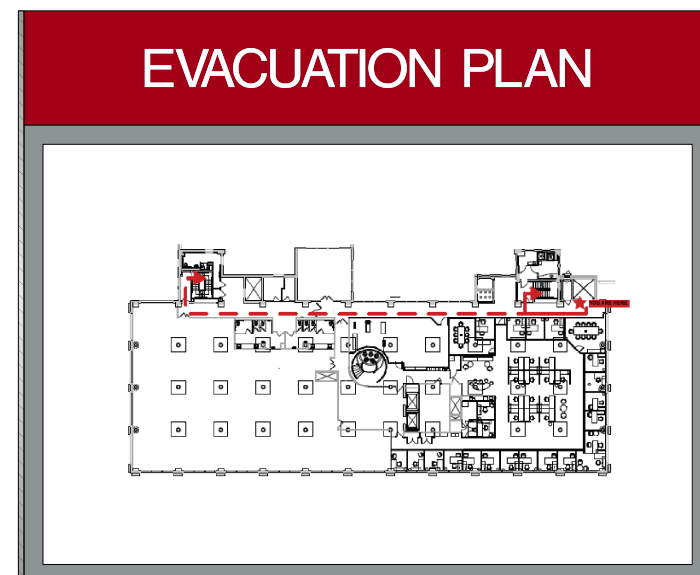
S.12
6" x 14"



S.16
8-1/2" x 34"



S.21
15" x 8-1/2"



S.22
15" x 18"

CONSTRUCTION DOCUMENTS

Revisions:

△	XXX
△	XXX
△	XXX
△	XXX



This document is the product and exclusive property of Harris & Associates, Inc. (Harris & Associates). It contains information that is confidential and proprietary to Harris & Associates, Inc. and its clients. It is not to be distributed, copied, or used in any way without the written consent of Harris & Associates, Inc. © Copyright 2022 Hayden Design.

Sheet:

ID1.00

X of X

Project Number: 22-130
Issue Date: 01/31/23
Drawn By: SLW
Checked By: LRT