

# SAFE CARE

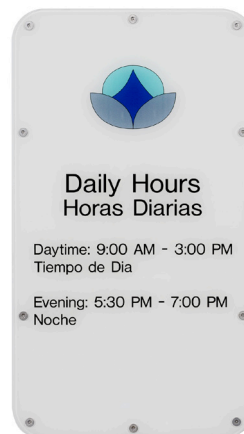
## SAFETY FIRST.

SAFECARE™ SIGNS HELP PROTECT THE PEOPLE IN YOUR CARE.

If you're looking for ways to create a safer, friendlier environment, our new line of SafeCare Signs has your back. We partnered with designers to develop a ligature resistant product specifically for behavioral health environments. We're proud to say it's the only American-made product featured in the New York State Office of Mental Health Safety Standards.

SafeCare is ideal for any facility where safety or durability are key factors, including healthcare facilities, schools, and prisons. Each sign is made of polycarbonate, which prevents the sign from breaking, preventing use as a choking hazard or weapon. The low-profile, beveled design eliminates sharp edges. Paint and graphics are subsurface, including ADA compliant tactile and Braille, to guard against tampering in high-traffic and vandalism-prone areas.

The signs install securely with tamper-resistant Pin-in-head Torx fasteners, plastic anchors, and adhesive. We can also supply other mounting options, such as spanner fasteners with butterfly anchors for drywall installations. A complete family of 16 sign types can be used for a variety of applications. In addition, 2/90 Sign Systems has a wide range of other products to meet all your signage needs.



# ENGINEERED FOR SAFETY. DESIGNED TO INSPIRE.

- Ligature resistant design with low profile.
- Subsurface paint and graphics increase durability.
- Subsurface ADA (SSA) compliant graphics.
- Beveled polycarbonate eliminates sharp edges.
- Polycarbonate prevents the sign from breaking.
- Securely mounts with tamper-resistant fasteners and adhesive.
- Sustainable attribute for message changes with supplied perforated paper inserts.
- Laser-print templates are available at [www.290signs.com](http://www.290signs.com).
- Select from 16 sign types to identify, inform, regulate, and direct.
- Available with one or two colors. Choose matching or complementary color for SSA.
- Choose from gloss vinyl colors for SSA copy; reference asterisk colors in color chart.
- Custom sizes or shapes are available.
- Made in the USA.



**SC.01**  
4.25" x 5"  
ADA ID



**SC.02**  
4.25" x 8.5"  
ADA ID with Logo



**SC.04**  
8.375" x 8.5"  
ADA ID with  
Changeable Name



**SC.05**  
11.875" x 8.5"  
ADA ID with Multiple  
Changeable Names



**SC.06**  
9.75" x 8.5"  
ADA ID with  
Permanent Name



**SC.07**  
9.75" x 8.5"  
ADA ID with  
Changeable Name  
& Reveal Message



**SC.03**  
4.25" x 10"  
ADA ID



**SC.08**  
10.5" x 8.5"  
ADA Regulatory  
Symbol



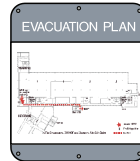
**SC.09**  
9" x 8.5"  
Permanent Information



**SC.10**  
15.25" x 8.5"  
Permanent Message  
with Changeable  
Information



**SC.11**  
15.25" x 8.5"  
Permanent Information



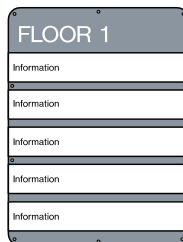
**SC.12**  
12.75" x 11"  
Permanent Message  
with Changeable  
Information



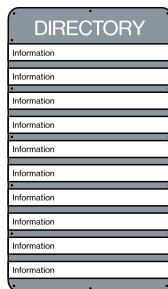
**SC.13**  
12.75" x 11"  
Permanent Information



**SC.14**  
19.75" x 12.5"  
ADA Regulatory  
Stairwell



**SC.15**  
22.375" x 17"  
Directory with  
Changeable Information



**SC.16**  
29.375" x 17"  
Directory with  
Changeable Information

