

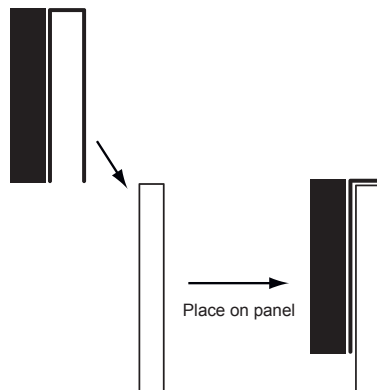
Applicable for PlusOne Workstation Nameplate.

This mount is intended for mounting thin style signs onto privacy panels. The mount is designed to rest over the top cap of the panel and places the top of the sign flush with the top of the panel.

1. Place mount over panel.

If there are any questions, please contact our Technical Support Department at 800.777.4310.

Typical Applications:



IMPORTANT: Prior to installation, remove all contents from box and inspect each sign for damage. Box should contain signs, hardware, and mounting instructions for each style of mount used. Surface of the sign must be handled with care. Do not remove. Clean with water and mild detergent.

Customer is responsible for suitability of each mounting option. Testing is recommended prior to each use.