

INSTALLATION INSTRUCTIONS – QUAD SIGN CEILING TRACK – MOUNT I

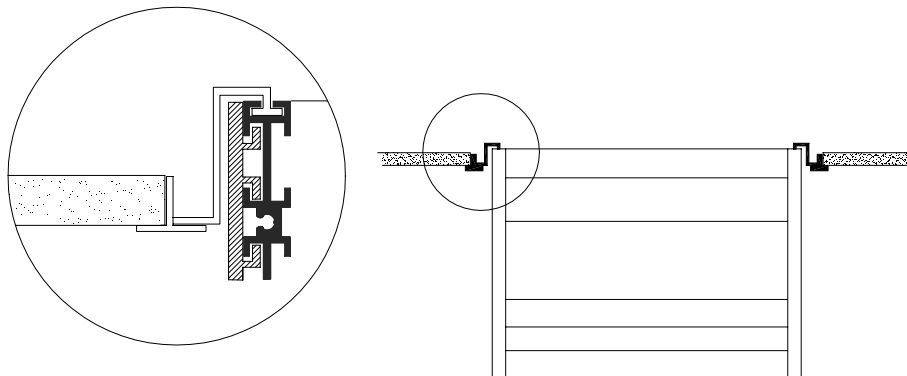
This mount is intended for installation of the Quad Sign to a suspended ceiling grid.

1. Remove corner caps from two opposite corners. Caps are held magnetically. (No tools are required for removal).
2. Remove ceiling panel and position sign in grid.
Note: When installing a 2'x2' sign in a 2'x4' grid, two 2" grid spanners should be inserted to frame on all four sides of sign.
3. Slide mounting brackets in top of each side of flange area facing outward from sign. Bracket flanges rest on "T" section of grid.
4. Check to insure all flanges are securely resting on grid.

On larger signs (4' square and over), additional support can be applied by adding hang lines to brackets.

If there are any questions, please contact our Technical Support Department at 800.777.4310.

Typical Application:



IMPORTANT: Prior to installation, remove all contents from box and inspect each sign for damage. Box should contain signs, hardware, and mounting instructions for each style of mount used. Surface of the sign must be handled with care. Clean with water and mild detergent.

Customer is responsible for suitability of each mounting option. Testing is recommended prior to each use.

Rev. 03/14/07